



Don't *Bug* Me!



JCC Workshop #2



**What do all of
these animals
have in
common?**





**How many
insect
species are
there?**





5.5 million





What is an insect?

Insect Taxonomy

Domain Eukaryota

Kingdom Animalia

Phylum Arthropoda

Subphylum Hexapoda

Class Insecta



Characteristics of Insects



6 Legs

- Attached to thorax



Exoskeleton

- Hard protective layer
- made up of chitin

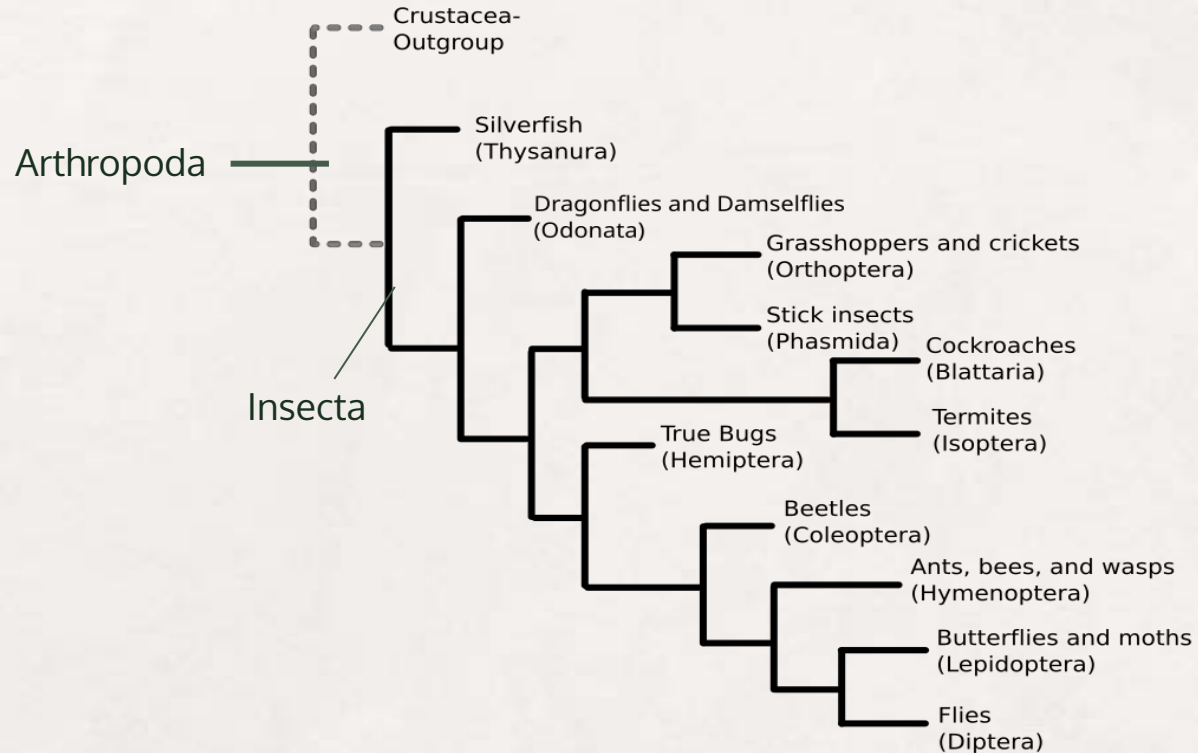


Segmented Body

- Head, Thorax, and Abdomen



Phylogeny



Body Parts of an Insect

Head

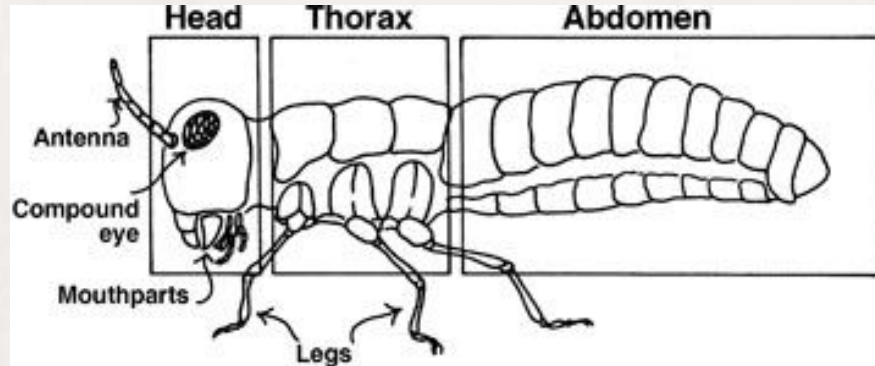
- Antenna
- Mouthparts
- Eyes

Thorax

- Wings
- Legs

Abdomen

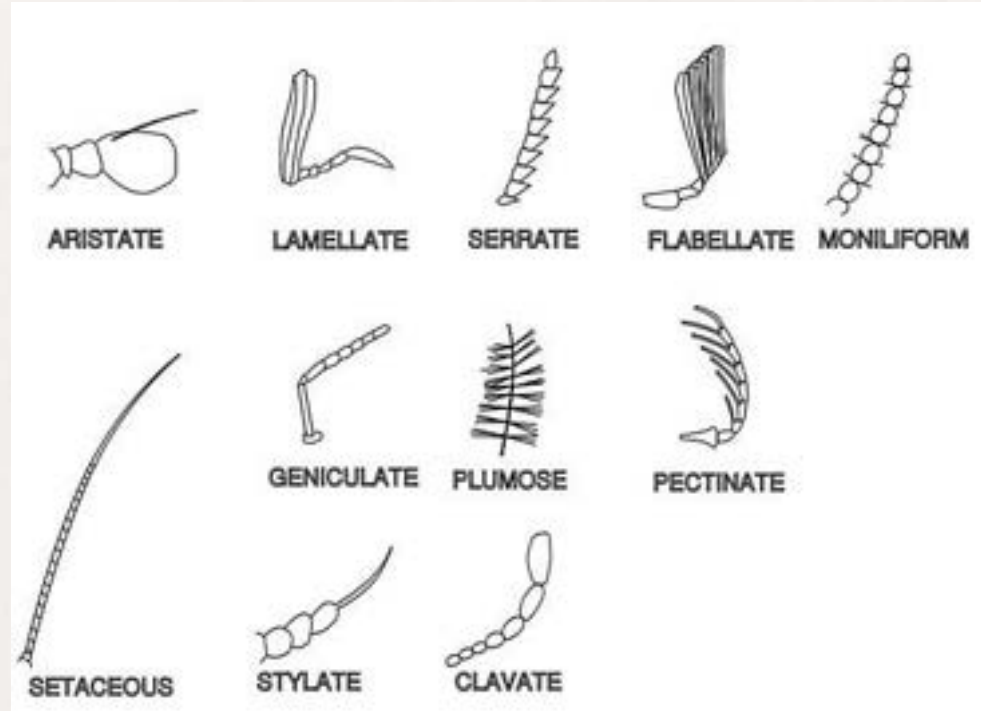
- Cerci
- Ovipositor



	<h1>Head</h1>	

Antennae

The antennae of insects are modified in many ways. Some of these modifications just provide greater surface area for sensory receptors, while others are unique adaptations that bestow special sensory capabilities, such as detecting sound vibrations, wind speed, or humidity.



Mouthparts



Chewing



Piercing-sucking



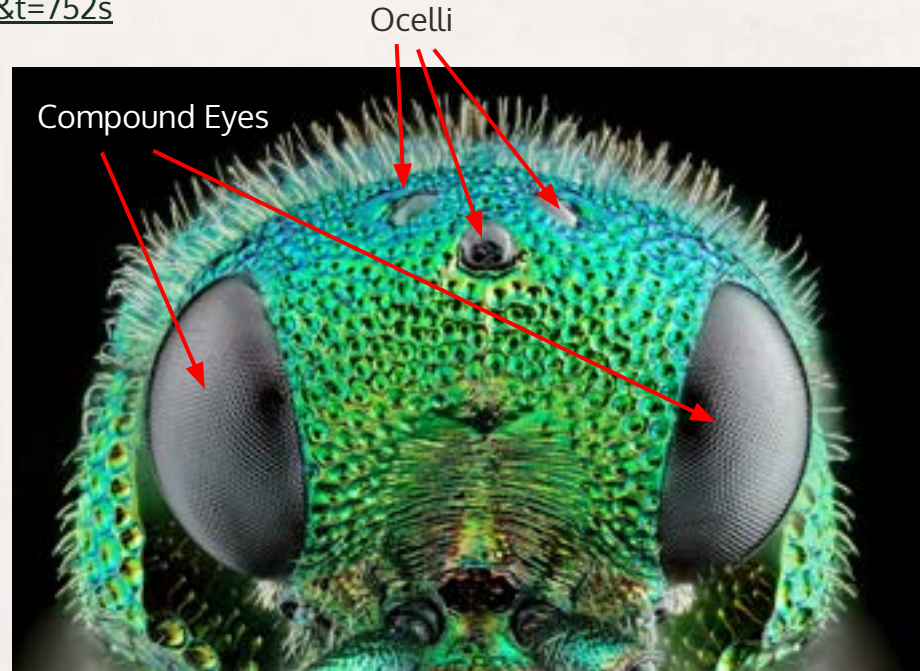
Siphoning



Sponging

Eyes

<https://www.youtube.com/watch?v=lrnDOovsmfg&t=752s>



- Coleoptera



- Diptera



- Lepidoptera



- Hymenoptera



Salvador Viana, 06.02.



©2011 D. Sullivan female



- Orthoptera



- Hemiptera

